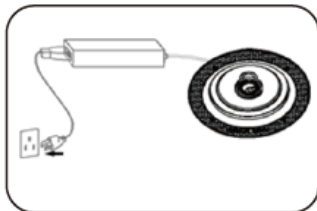


Wireless WiFi Bluetooth Ceiling Speaker

DAN-WIFI-300

User manual

Version 1.0



The power supply unit uses dangerous mains voltage. Leave servicing to skilled personnel only. Inexpert handling of the unit may result in electric shock.

Das Netzgerät wird mit lebensgefährlicher Netzspannung versorgt. Nehmen Sie daran keine Eingriffe vor. Es besteht die Gefahr eines elektrischen Schlags.



If the unit is to be put out of operation definitively, take it to a local recycling plant for a disposal which is not harmful to the environment.

Soll das Gerät endgültig aus dem Betrieb genommen werden, übergeben Sie es zur umweltgerechten Entsorgung einem örtlichen Recyclingbetrieb

MARD AUDIO
Rübekampstr. 35
46117 Oberhausen
Germany
WEEE-Reg.-Nr. DE74433818



1. Overview

The DAN-WIFI-300 wireless WIFI Bluetooth ceiling speaker supports dual-band WiFi and Bluetooth wireless connection. The speaker is a 6.5-inch full-range speaker, integrated with a built-in tweeter, realizing full-frequency coverage of 20-20KHz, and SPL up to 90db. South Korea's Neofidelity NTP8835C is selected as power amplifier chips for the ceiling speakers. Professional tuner divides the frequency and adjusts the equalization of the sound. The level is clear and the sound quality is outstanding. The overall power of the DAN-WIFI-300 ceiling speaker is 50W, which makes it be applied to a variety of occasions. The DAN-WIFI-300 wireless WIFI Bluetooth ceiling speaker also supports Apple AirPlay multi-room function and the industry's device interconnection standard DLNA. It can wirelessly play music on devices such as iPhone, iPad or iPod touch through the AirPlay multi-room. It can also use third-party player which is in compliance with DLNA standard to play music on Android devices or PCs. Dual-band WiFi full-speed transmission, and diversified experience HiFi music played without delay can be realized through DAN-WIFI-300.

Function Introduction

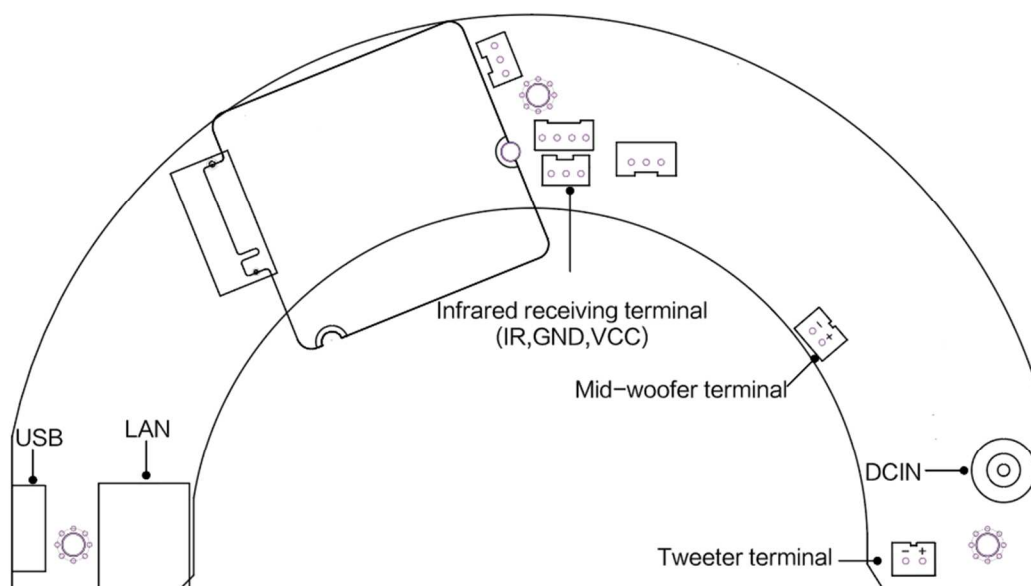
- Wi-Fi protocol: IEEE 802.11 a/b/g/n/ac 1x1 dual band WiFi 2.4 GHz and 5GHz
- Bluetooth protocol: BT5.0 with EDR and BLE
- Support WiFi/Bluetooth/U disk playback
- Support APP interconnection control
- Support 10/100Mbps Ethernet access
- Support HTTP/HTTPS/RTSP/MMS/TS protocol
- Support Airplay/DLNA/Qplay streaming media protocol
- Support Airplay, Spotify, Bluetooth multi-room playback

- Support Spotify / Tuneln / iHeartRadio / Amazon music /Tidal etc.
- Support common lossless audio format decoding, up to 192kHz/24bit format
- Support MP3、AAC、FLAC、ALAC、WMA、APE、WAV、OGG and other audio formats

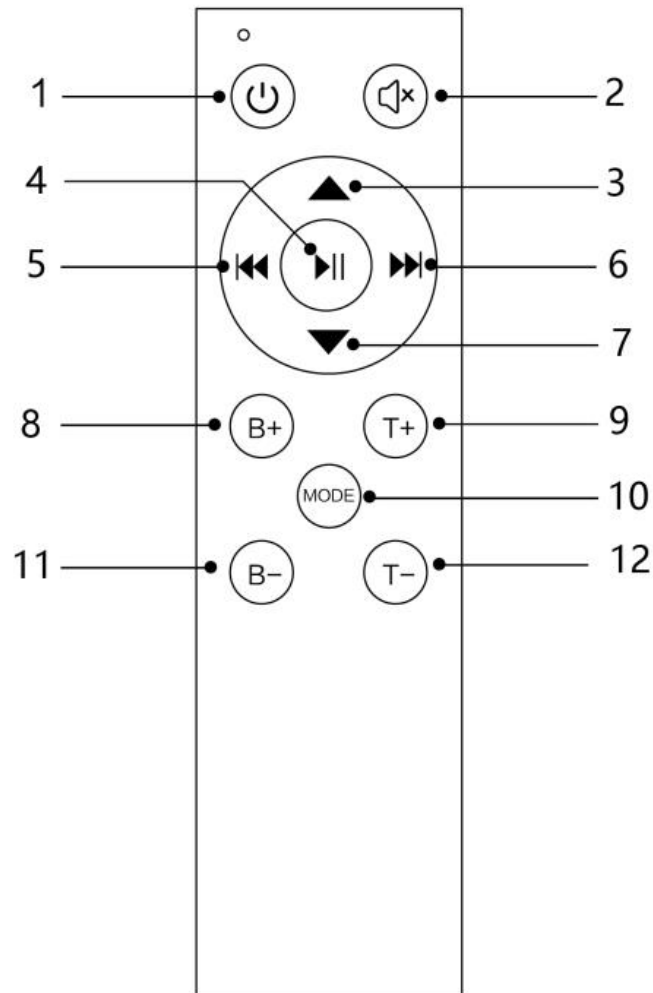
2.Technical Parameters

Items	Descriptions
Product Name	Wireless WiFi Bluetooth Ceiling Speaker
Product Model	DAN-WIFI-300
Audio Input	WiFi 2.4G&5G / Bluetooth 5.0 / USB
Work Voltage	DC 24V-5A
Output Power	50W (8Ω)
Frequency Response	20Hz-20kHz
Harmonic Distortion	0.1%
SNR	90db
Sensitivity	88±3db
Music Format	MP3 / AAC / FLAC / ALAC / WMA / APE / WAV / OGG etc.
Music Source	Tuneln / iHeartRadio / Spotify / TIDAL / Napster / Qobuz etc.
Music Streaming Protocol	Airplay、DLNA、QPlay
Dimension	23.5cm×9.7cm
Net Weight	1.4kg

3. Structure Description



4. Infrared remote control description



(Remote control)

NO.	Name	Features
1	Standby key	Enter standby/Exit standby
2	Mute button	Short press: Mute/Unmute Long press: Factory reset
3	VOL+	Volume Plus
4	Play/pause	Short press: Play/Pause Long press: WPS/Pairing

5	Previous song	Previous song
6	Next track	Next track
7	VOL-	Volume down
8	B+	BASS strengthening
9	T+	TREBLE strengthening
10	MODE	Short press to switch modes : (WiFi-->BT- ->USB), Long press to reset system parameters
11	B-	BASS weaken
12	T-	TREBLE weaken

5. Instructions for use

Please follow bellow instructions to use **DAN-WIFI-300 WIFI BT Ceiling Speakers**.

5.1 APP application

Please download the **Audio System** from the APP Store or Google Play so as to use DAN-WIFI-300 ceiling speaker together with the supporting power amplifier. The APP in the following document descriptions refers to the **Audio System**.



Audio System

5.2 Connection and installation

5.2.1 Ceiling Speaker connection

After taking out the DAN-WIFI-300 ceiling speaker, read the picture instructions of the product firstly. Plug in the Ethernet wire to the ceiling speaker(when needed), plug the matching power adapter into the DC socket to supply power to DAN-WIFI-300.

Prepare a USB flash driver with music or songs in advance if the USB flash drive will be used for playing music or songs.

5.2.2 Installation

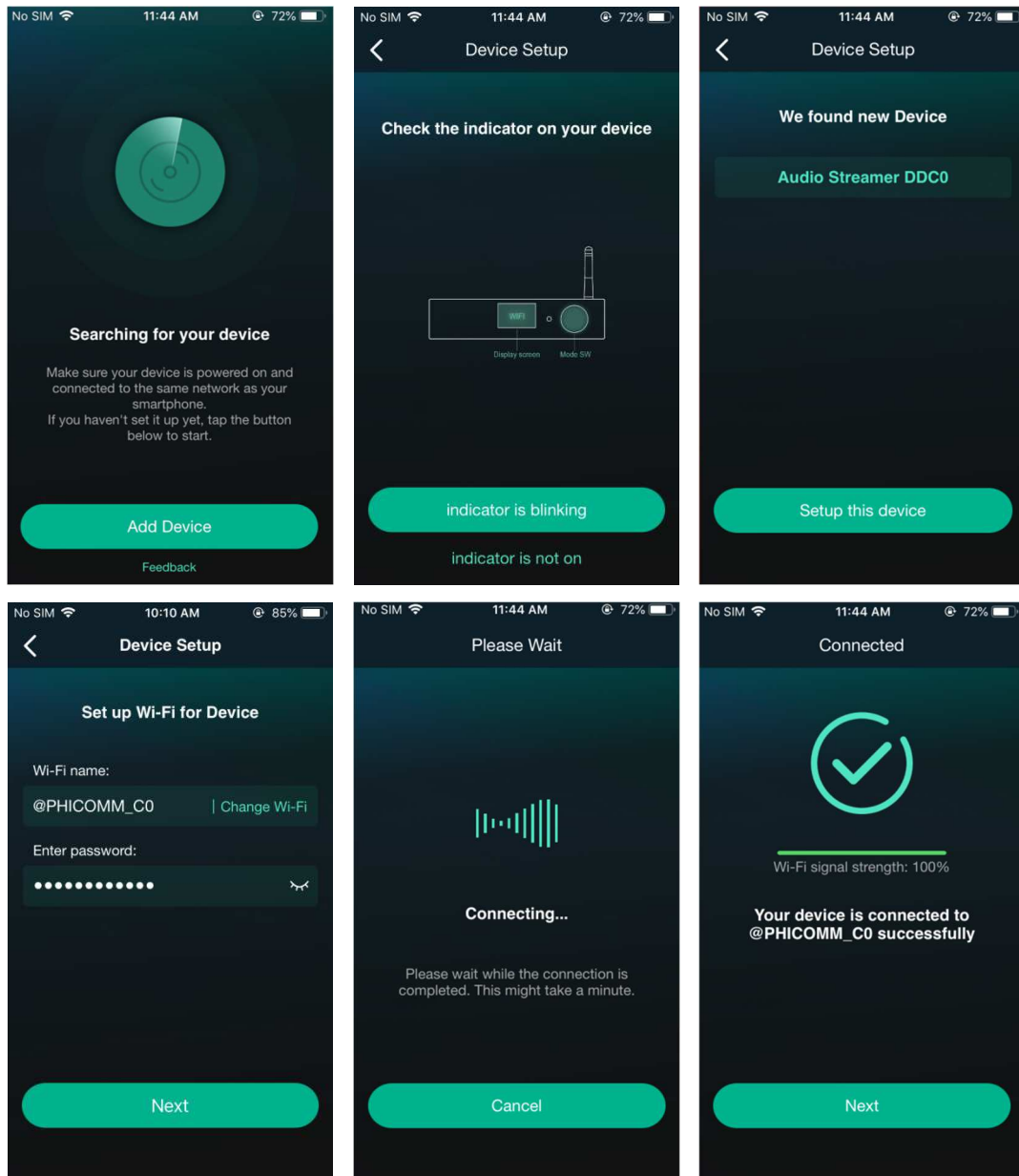
Before installing the speaker, remove the magnetic grille firstly, then put the speaker into the pre-opened hole on the ceiling (hole size can be consulted with customer service). Remove the buckles on the speaker and put it to suitable positions. Use a screwdriver to tighten the positioning screws. When the speaker surface is leveled with the ceiling, cover the net grille.

5.3 Start-up and configuration of network

After powering on the ceiling speaker with the adapter, and after hearing the speaker startup prompt, open the APP on your smart mobile phone, and follow the APP prompt to link the ceiling speaker to the wireless network (as shown in the figure below). The speaker can also be connected to the Ethernet at the same time. Ethernet has priority in connection. For more instructions on APP operation, please refer to the User Operation Guide of the Audio System.

DAN-WiFi-300

multiroom single speaker



5.4 Prompt and Operations

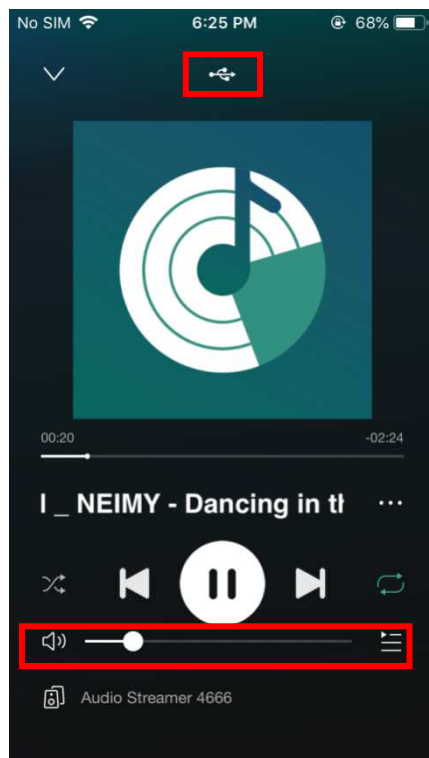
5.4.1 Voice prompt description

The DAN-WIFI-300 ceiling speaker will send a voice prompt to remind the user. The user might use the DAN-WIFI-300 ceiling speaker according to the voice prompt. The voice prompt description is as follows:

- When the source is switched, "WiFi Mode" "Bluetooth Mode" "UdiskPlay" will be prompted.
- In WiFi setting mode and Bluetooth pairing/disconnecting, prompt sound of "setting" or "connection" will be sent out.

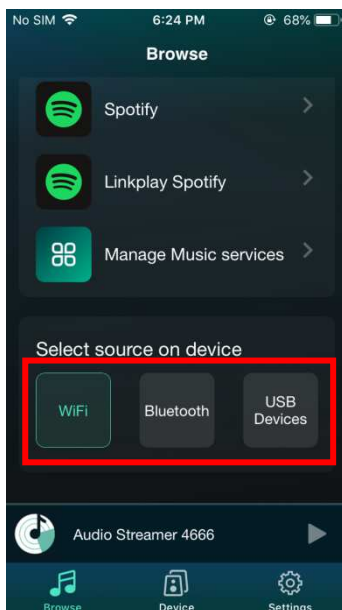
5.4.2 APP display instructions

After the DAN-WIFI-300 is connected to the network, you can check the working status of the DAN-WIFI-300 on the APP (as shown in the picture below), including play progress, song information, and volume.

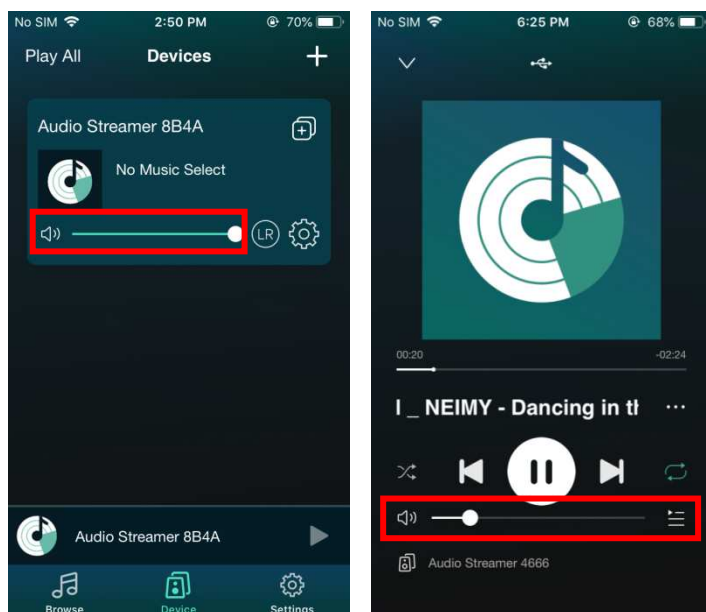


5.4.3 Operation instructions

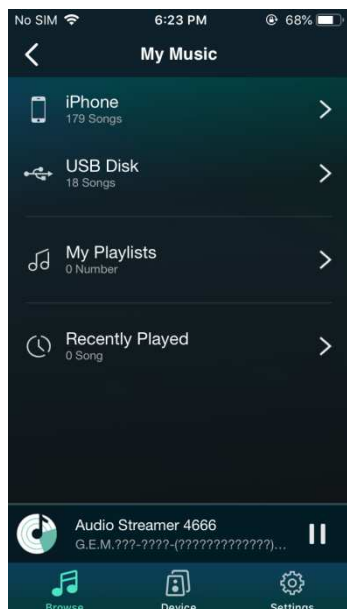
- **Standby and wake-up:** When DAN-WIFI-300 is working, short press the standby button on the remote control to control the DAN-WIFI-300 to enter standby and stop the music; when the DAN-WIFI-300 is in standby, short press the standby button on the remote control or select the song to play in the APP or Select Source to wake up DAN-WIFI-300.
- **Source switching:** When DAN-WIFI-300 is working, you can short press the MODE button of the remote control or switch the Source on the APP. The MODE button Source switching cycle sequence is WiFi->BT->USB; select Source in the APP as shown in the figure below:



- **Volume adjustment:** The volume of the DAN-WIFI-300 can be adjusted through remote control and APP. The output gain of the ceiling speaker changes with the volume level and is displayed on the APP volume bar. (as shown in the picture below)



- **Audio operation:** When the DAN-WIFI-300 is working, you can control previous/next song, play and pause on the APP or by remote control, and can also directly select and play local music in the APP, or the music list of the USB Disk (as shown in the figure below). Support drag the playback progress on the APP and switch the playback mode (such as random



- **BASS/TREBLE adjustment instructions:** DAN-WIFI-300 can use the remote control to adjust BASS and TREBLE. There are 10 BASS/TREBLE levels for adjustment, and the positive and negative gains are 5db respectively. The power amplifier output will change with the adjustment.
- **Parameter reset:** Long press the MODE button of the remote control to reset the system parameters of the DAN-WIFI-300, and reset the BASS, TREBLE and volume to the factory default state.
- **Restore factory settings:** In the Device interface of APP, Select the Device → Enter the setting → Device information. DAN-WIFI-300 can be operated to restore factory Settings (as shown below). Reset the system parameters to the factory default state, and clear the wireless network and Bluetooth connection information.

