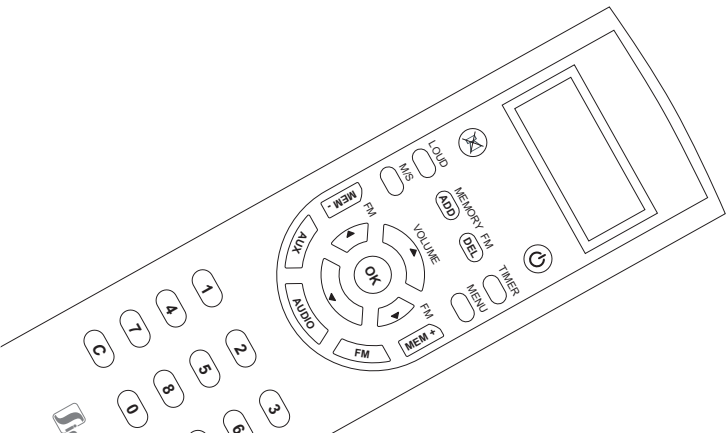




kit  room



User's manual

We are grateful for your acquisition of our sound kit. This product has been thought to enjoy your favorite FM radio stations, remaining perfectly adapted with the decoration of any room in your house, office or business.

It is always available and controlled by a remote control which will let you to access to all the equipment benefits.

Easy installation, the speakers are placed as a halogen light bulb. The power supply, the tuner and the amplifier are integrated in the speaker itself.

The main characteristics of this kit are:

- Easy use remote control
- Power supply adapted to different voltages (100 a 240v)
- Stereo amplifier 1.5 + 1.5W
- 2.5" Speakers with aluminum ring and grill
- FM tuner integrated with RDS to identify different radio stations
- IR communication between the speaker and the remote control

From the remote control keyboard and through its easy handling you can run the following functions:

- Audio control: volume, bass, treble, balance, loudness, mute, mono/stereo

- Eight characters display with light
- Visualization of the radio station name (RDS function) and frequency
- Automatic radio station searching option
- 15 memories
- Automatic memorization of the radio stations with more quality
- Selection of one radio station through direct marked of the frequency or the memory number
- Clock
- Switch off timer
- Alarm clock for scheduled switch on
- Configuration menu

About this instructions manual

This manual contains the information that you need to manage the product.

This kit must be installed according to the INSTALLATION MANUAL obeying the current law running in each country.

Index

Introduction	9
Safety measures	10
Elements identification.	11
General use description	12
Operating audio functions	13
Switch on	
Volume, bass, treble, balance	
Mute, Loudness, Mono/stereo, Ideal	
Operating clock functions.	13
Timer, clock	
Operating the FM tuner	14
Searching, Memories	
Configuration menu	15
Alarm clock, clock	
Lighting	
FM sensitivity	
Automatic Turn-On	
Mono installation	
Initialization, Version	
Technical Data.	16
Guarantee.	16

Safety and precaution measures

Safety and precaution measures

To guarantee your own safety and other people's one, be sure of reading the instruction carefully before using this product.

Note: keep this manual in a safe place to read it again when it's necessary.

Electricity Danger

The inside of this product has danger voltage. You never open the casing or introduce objects into the slots.

Connect the product to a suitable power supply which has been properly and safely installed.

Do not connect the equipment if it presents visible defects.

If a breakdown occurs (as smoke or something similar) when starting the switch on process, disconnect it immediately from the electric source.

Let a professional get in charge of any repairation.

Turn off the equipment during electric storms or when it is not being used for a long time

Danger of an electric shock cause by humidity

The equipment must not be exposed to any source of water (dripping or splashing). Do not let any liquid enter inside the equipment.

Notes for the equipment's placement

Place the speakers fitted.

Do not expose the speakers to extreme temperatures. The equipment must not get extremely hot. The extra heat could damage the product and it could be danger of fire.

The equipment must not be near flammable materials. This equipment has been designed to get a reasonable protection against interferences in domestic installations. Nevertheless it is not possible to guarantee the possibility of some affected installations. If this is the case, reorient the FM antenna, increase the distance between the interferences source and/or connect the equipment to a different power circuit from the one that uses the interference generating source.

Battery

Be careful with the batteries use. To avoid battery leaks that may cause problems:

- Install all the batteries in the proper position, following the + and instructions of the remote control.
 - Do not mix up old batteries with new ones.
 - Take off the batteries when do not use the equipment for a long time.
- To push out the batteries, take off the lid at the back pushing the peg at the same time that you pull out the

lid, take off the used batteries, put in the new ones AA 1,5V and place the lid.

Do not throw the batteries into the organic rubbish



Notes

Switch on the equipment only right after it has been properly connected.

If you open the product it will lose the guarantee.



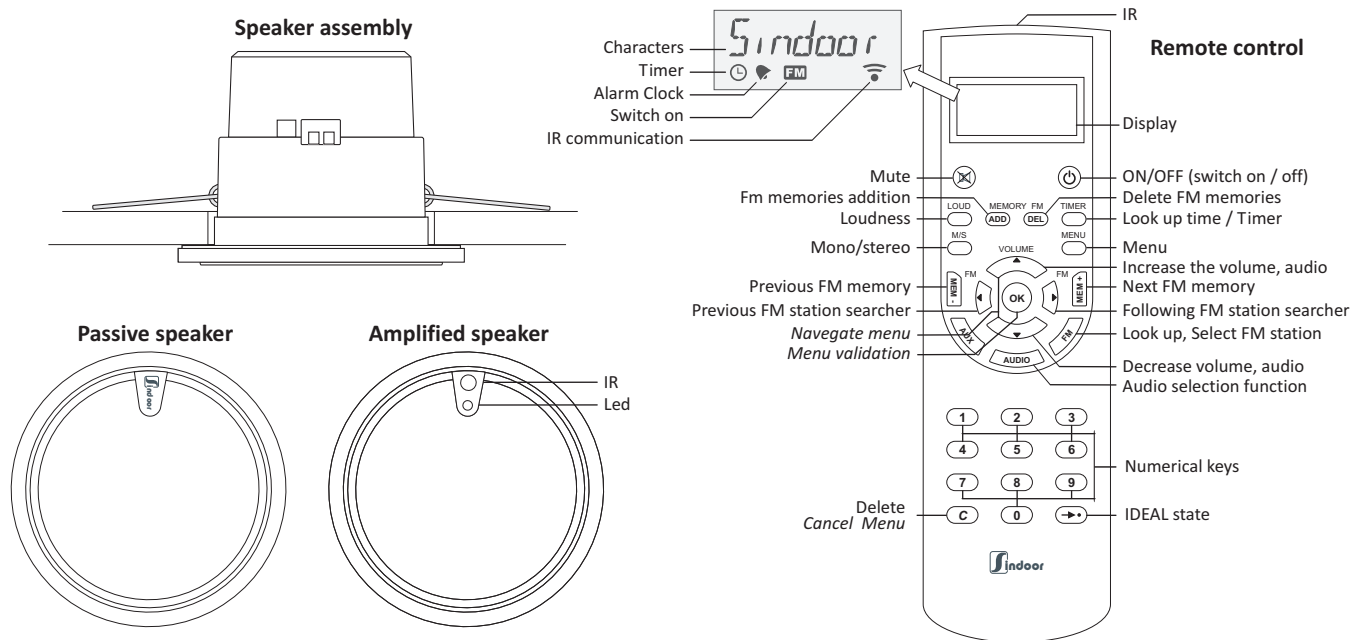
Type II Equipment, I do not need earth connection



Designed for domestic use



It obeys the CE laws



The equipment

To carry out any kind of action you should point with the remote control to the IR interface of the speaker and place yourself five meters or less from the equipment.

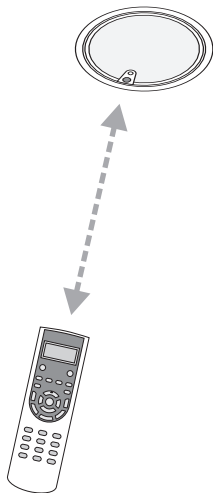
If the equipment is switched off or mute the only options that work are the On/off options, the clock and the menu. You can also deactivate the mute option if it is not disconnected.

When we switch off the equipment, the frequency of the radio station and the audio features (volume, lowness and highness and mono) remain memorized and they are retrieved once you switch on the equipment again.

When we connect the equipment to the electric feeder it recovers the IDEAL condition. It also deactivates the alarm clock and the timer, and restarts the clock.

The IDEAL condition is defined by the manufacturer and it can be modified by the user (see programming the IDEAL condition)

Some options as the clock, timer, or alarm clock keep the amplified speaker fed, in standby or even when it is switch off.



Remote control

All the functions are controlled through the remote control.

The remote control exchanges information with the amplified speaker. When this process happens the IR communication symbol appears on the display and the speaker's led blinks.



If the information is missing the Error message will be shown in the display.



Every operation is visualized in the display.

Some seconds after using the remote control:

- The display light switches off (if this one was on)
- The display switches off (if it was off)
- The current frequency of the radio station is seen in the display (if the equipment is switched on). If the timer option is on, the display will be off after blinking a few seconds.

The numeric keys let you to introduce characters to select the FM frequency, the number of the memory or the timer time. The key [C] let you to delete the last character introduced.

freq	87.5	108.0
memo	1	15
timer	1	59

On/Off

Press [ON/OFF] to switch on or off.
The led shows if the equipment is on or off

Keys



Display

ON

Volume control

Press [UP] or [DOWN] to put up or down the volume
Visualizes the volume level



VOL 50
FM

Bass, treble, balance control

Press [AUDIO] to choose the option
Press [UP] or [DOWN] to go up or down
Show the bass, treble or balance level



BAS +01
FM

Mute

Press [MUTE] to silence, or not, the speaker
The led blinks constantly if it is switched on



MUTE ON
FM

Loudness

Press [LOUD] to reinforce the bass sounds according to
the volume level



LOUD ON
FM

Mono/stereo

Press [M/S] to change mono or stereo
If the equipment is configured Mono, it always will
work in mono option (see configuration menu)



MONO
FM

Ideal state

Active it

Press [IDEAL] briefly to access to the previously
programmed IDEAL configuration



IDEAL
FM

Program it

Select the radio station and the bass, treble and
volume level, and loudness wished
Press [IDEAL] (more than three seconds)
to memorize it



IDEAL ✓
FM

Timer

Program it

Press sequentially the numeric key for the auto switch
off time (max. 59 min.)
Press [TIMER] briefly to program and activate it



30
OFF :30
⌚

Activate / Deactivate

Press [TIMER] (more than three seconds) to change it.
(it only can be activated if the time has been
programmed)



TIM OFF
FM

*Note: when you switch off the equipment the timer is
deactivated*

Look up the clock

Press [TIMER] to see the alarm clock, the timer and
the clock



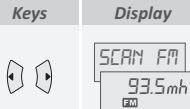
09:45
OFF :30
⌚
13:28

*Note: the alarm clock and the timer can be visualized
only if they are activated*

Operating of the FM tuner

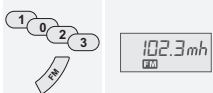
Searching radio station

Press [RIGHT] or [LEFT] to search the following or previous radio station
Visualize the frequency of the found radio station



Selection of a radio station

Press sequentially the numeric key of the chosen radio station frequency
For example: 102.3 MHz
Press [FM] to make the selection



Searching memories

Press [MEM+] or [MEM-] to find the previous or following radio station
Visualize the memory and the frequency of the radio station found



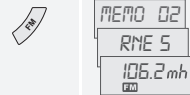
Selection of a memory

Press sequentially the numeric key of the chosen memory
Press [FM] to select it



Looking up the current radio station

Press [FM] to consult
Visualize the number of the memory (if it is memorized), name of the radio station (if it receives RDS) and frequency



Radio station memorization

Add one radio station in a free memory

Select the radio station previously
Press [ADD] briefly to memorize it



Add one radio station in one specific memory

Select the radio station previously
Press sequentially the numeric key of the chosen memory
Press [ADD] briefly to memorize it



Delete the current memory

Press [DEL] briefly seconds to delete it



Delete one specific memory

Press sequentially the numeric key of the chosen memory
Press [DEL] briefly to delete it



Add automatically all the memories

Press [ADD] (more than 3 seconds) to memorize the radio stations with better quality
The led light blinks during this process which can take some seconds

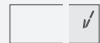


Delete all the memories

Press [DEL] (more than 3 seconds) to delete



Note: every operation is confirmed by the OK that it is shown in the display



Navigation

Press [MENU] to enter or exit from the menu
Press [UP] or [DOWN] to choose the option wished from the menu, the different options appear in the display sequenced

Press [OK] to select the option chosen
Go to the option management

Note: the keys [UP] or [DOWN] are used to navigate inside an option

Press [OK] to get out from an option and validate the modification, visualize OK in the display
Press [C] to get out without modifying

Alarm clock activation

Press to connect or disconnect the alarm clock which will switch on the equipment at the programmed time

Alarm clock time/ Clock time

Press sequentially the numeric key to select the time chosen
The number edited blinks

Keys	Display
MENU	ALARM-ON
UP/DOWN	ALARM-ON ALARM CLOCK LIGHT FM SENS AUTO-ON MONO-ST RESET VERSION
OK	
OK	OK
C	
UP/DOWN	ALARM-ON ON OFF
1 0 2 3	ALARM CLOCK 10:23

Display illumination

Press to activate or deactivate the illumination of the display

Sensitivity of the tuner search

Press to change the FM tuner searching sensitivity (HIG: high / MED: medium / LOW: low)

Automatic Turn-On

Press to change the auto- switch on (if it is ON the equipment will switch on when it receives the power)

Mono Installation

Press to change the type of installation (Only for stereo kit)

Initialization

Press to activate the initialization of the equipment
It only starts if YES is selected

Version

Visualize the version software of the equipment

Keys	Display
UP/DOWN	LIGHT ON OFF
UP/DOWN	FM SENS HIG MED LOW
UP/DOWN	AUTO-ON ON OFF
UP/DOWN	MONO-ST MONO STEREO
UP/DOWN	RESET YES NO
	VERSION V. 21022

General Characteristics

Stereo Amplifier
Speakers 2, 5"
FM tuner with RDS
Electric power feeder
Totally integrated electronics in one speaker
IR Remote control

Audio characteristics

1,5W power by channel
Volume level regulation 55dB
High and loud sounds ± 15 dB regulation
Balance regulation 10dB
Loudness and mono functions

Speakers Characteristics

2,5" and 16 oh. Speakers
Aluminum ring and grill
IR integrated in the ring

FM tuner characteristics

Receiver frequencies rank from 87.5 to 108MHz
Antenna impedance: 75 oh.
Antenna sensitivity 3.5 μ V
RDS sensitivity 15 μ V
Stereo distance >25dB

Power Supply Characteristics

Input power supply from 90 to 240V AC (50 to 60Hz)
Current consumption while working <5W
Maximum consumption in standby 0,2W

Remote control characteristics

Bidirectional communication with the speaker through IR
Power supply with two 1.5V AA type batteries
LCD with eight alphanumeric characters and symbols
30 keys silicone keyboard

Clock Characteristics

Visualization on the remote control of the hours and minutes
60 minutes switch off timer
Programming turn on through alarm clock

Temperature

Working temperature from +5° C to +40°C

Guarantee Conditions

Sound Indoor guarantees the Quality of its products against any manufacturing defect under the term previously established and for a period of two years from the shipping date.

The defective or broken down products should be sent back to Sound Indoor S. Once the products were repaired they will be sent back to the customer. The postages will be always paid by the customer.

This guarantee does not include the defects produced by negligence, knocks or improper manipulations, improper installations, improper electrical power or standard wearing out cause by normal use.

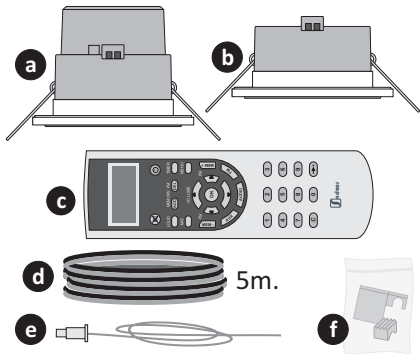
The guarantee will lose its value:

- If some pieces of information of the guarantee or the proof of payment are modified, changed, or substituted.

- If the identity number or the product itself are modified or manipulated without previous knowledge of the Technical Service.

To make use of the guarantee it is absolutely necessary to provide the identity number of the product and the proof of payment..

INSTALLATION MANUAL



COMPONENTS

- 2.5" amplified speaker with tuner and power supply (a)
- 2,5" passive speaker , only in the stereo kit (b)
- Remote control (c)
- Speaker connection wire (only in the stereo kit (d)
- FM antenna (e)
- Two 1,5v (AA type) batteries
- Manuals and accessories (f)

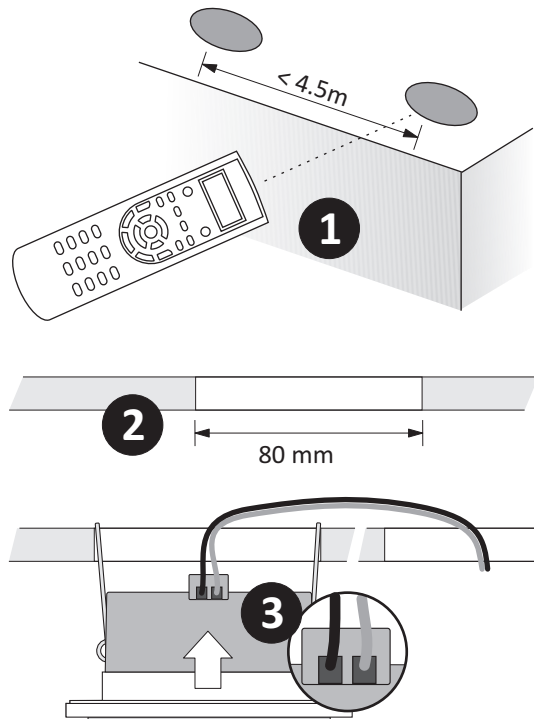
PLACEMENT

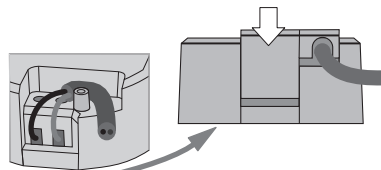
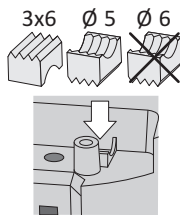
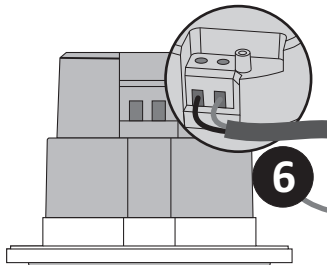
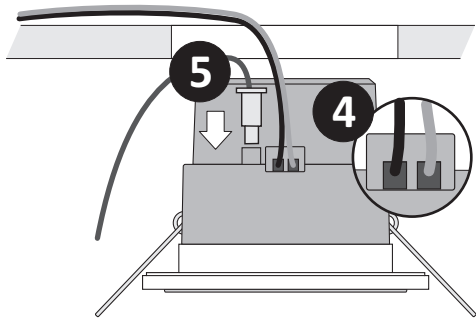
1 Choose the place or surface to install the speaker. The amplified speaker must be in a place where the speaker could receive the IR signal from the remote control. It should be far away from humidity (two meters minimum) and in a ventilated place.

INSTALLATION

2 Make two holes with 80mm of diameter (± 3 mm) in the surface where the speaker will be installed. (only one for the mono kit)

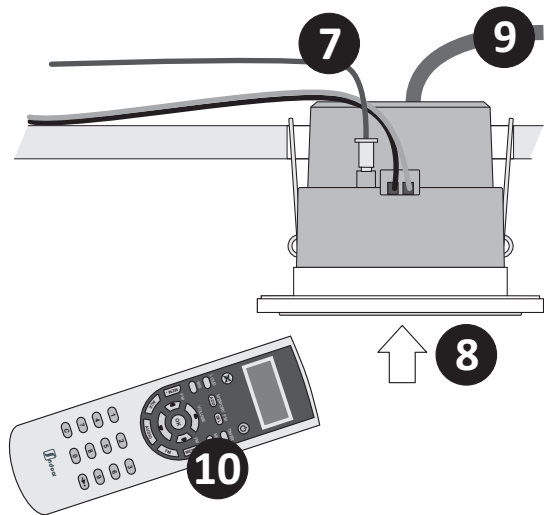
3 Install the passive speaker taking the connection wire to the other speaker's placement.





- 4** Connect the passive speaker wire to the terminal block of the amplified speaker.
- 5** Switch on the FM antenna of the amplified speaker.
- 6** Connect it to the electric power. Insert the clamp according to the wire's diameter. Put the cover back.
- 7** Introduce the antenna cable through the hole where the speaker is placed, taking care putting the wire spread and far away from fluorescent lights, halogen lamps, power supplies, fans, dimmers and so on.
- 8** Introduce the amplified speaker in its placement.
- 9** Provide power supply to the installation. The amplified speaker's luminous indicator or led blinks four times to show that the module has been properly started.
- 10** Insert the batteries in the remote control.

Note: the third and fourth steps are not necessary in the mono kit





Sound Indoor S. C.

Polígono El Plano nave 93

María de Huerva, 50430 Zaragoza (ESPAÑA)

Tel.: +34 976 126 571

ventas@sindoor.es



Sound Indoor SC reserves the right to make changes without prior notice.
Sound Indoor SC is not responsible for any errors or omissions that may appear in this manual